

Product Overview

FIRST AID

First-Aid Cabinets City-Series

1 DOOR

Cabinet, one door
302 x 362 x 140 mm



FEATURES:

- high quality sheet steel
- thickness 0,7 mm
- frame built from one piece
- electrostatically primed
- rounded and streamlined
- no sharp corners or edges
- back with hanging facility
- safety cylinder lock
- each cabinet with two keys
- hinged doors
- all-round sealing
- door with hinged tray
- inner partitioning with shelves
- partly with drawers
- partly with door compartments
- coloured pictograms

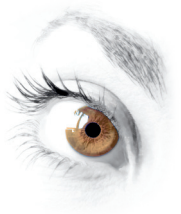


2 DOORS

Cabinet, two doors
404 x 462 x 170 mm



For more products and details please visit our website: www.soehngen.com



FIRST AID

First-Aid Contents for Cases and Cabinets

Filling 13157

Content Norm pursuant to German DIN 13157

- 1 aluderm® dressing sheet 60 x 80 cm
- 1 aluderm® bandage packet small
- 3 aluderm® bandage packet medium
- 1 aluderm® bandage packet large
- 1 WS elast. bandage 4 m x 6 cm
- 1 WS elast. bandage 4 m x 8 cm
- 1 WS fixing bandage 4 m x 6 cm
- 1 WS fixing bandage 4 m x 8 cm
- 6 aluderm® compress, 10 x 10 cm, single pack
- 2 aluderm® eye compress DuOcul
- 1 set of 20 aluderm®-aluplast finger plasters
- 1 SÖHNGEN® Plast 5 m x 2,5 cm
- 1 aluderm®-aluplast elastic 8 pcs. 10 x 6 cm
- 1 SIRIUS® rescue sheet 160 x 210 cm
- 2 triangular bandage V
- 1 First-Aid scissors 19 cm
- 5 non-woven towel 20 x 30 cm
- 2 PE-bags, reclosable, 30 x 40 cm
- 1 set of 4 vinyl gloves, disposable
- 1 instant ice pack, single use, small
- 1 AirVita® BiProtect breathing device

Filling 13169

Content Industry Norm pursuant to German DIN 13169

- 1 DERMOTEKT® dressing sheet 60 x 80 cm
- 1 aluderm® dressing sheet 60 x 80 cm
- 1 aluderm® bandage packet small
- 3 aluderm® bandage packet medium
- 1 aluderm® bandage packet large
- 1 DermaCare® bandage packet small
- 3 DermaCare® bandage packet medium
- 1 DermaCare® bandage packet large
- 2 WS elast. bandage 4 m x 6 cm
- 2 WS elast. bandage 4 m x 8 cm
- 2 WS fixing bandage 4 m x 6 cm
- 2 WS fixing bandage 4 m x 8 cm
- 6 aluderm® compress, 10 x 10 cm, single pack
- 6 DermaCare® compress, 10 x 10 cm, single pack
- 4 aluderm® eye compress DuOcul
- 2 set of 20 aluderm®-aluplast finger plasters
- 2 SÖHNGEN® Plast 5 m x 2,5 cm
- 2 aluderm®-aluplast elastic 8 pcs. 10 x 6 cm
- 2 SIRIUS® rescue sheet 160 x 210 cm
- 4 triangular bandage V
- 1 First-Aid scissors 19 cm
- 10 non-woven towel 20 x 30 cm
- 4 PE-bags, reclosable, 30 x 40 cm
- 2 set of 4 vinyl gloves, disposable
- 2 instant ice pack, single use, small
- 1 AirVita® BiProtect breathing device



A glimpse on German Workplace Recommendations:

The recommended quantity of First-Aid Kits is depending on the individual working risks within the different business branches as well as on the number of employees.

Business branch	Risk	Employees	Kit	Filling pursuant to
Administration	low	1 - 50	1	DIN 13157
		51 - 300	*	DIN 13169
Manufacturing	medium	1 - 20	1	DIN 13157
		21 - 100	*	DIN 13169
Construction	high	1 - 10	1	DIN 13157
		11 - 50	*	DIN 13169

*For a larger number of employees further First-Aid equipment is required.